

## Hardware Integration with LTAH103C Serial Device Server

### Content

Preparation	1
Hardware Setup	2
Configuration Steps	3-5

### Preparation

LTAH103C Serial Device Server serves as a RS232 COM to Ethernet LAN TCP/IP converter, itself will be assigned an IP address and treated as a network device. The purpose of using this module is to realize the hardware integration of any unit using a RS232 communication interface (i.e. POS system) with a DVR/NVR, thus providing a possible solution for integrating multiple RS232 units into the network.

#### Equipment List:

LTAH103C Serial Device Server

A Windows OS Computer

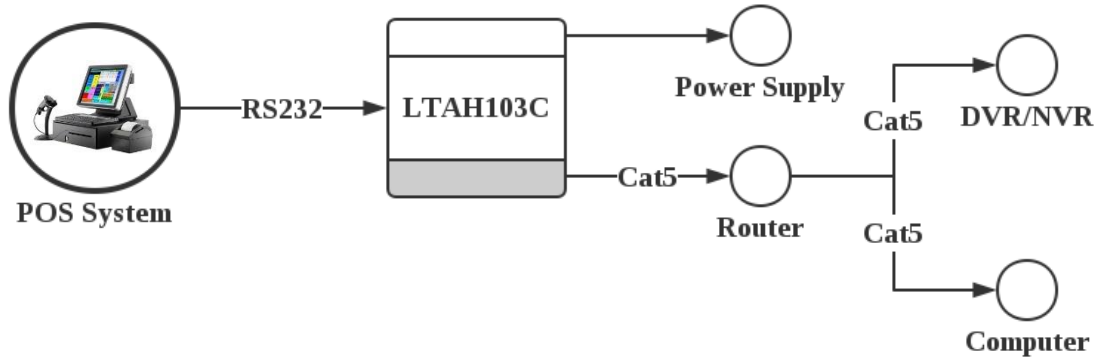
A Router

DVR/NVR

POS system

Serval Cat5/Cat6 Cables

## Hardware Setup

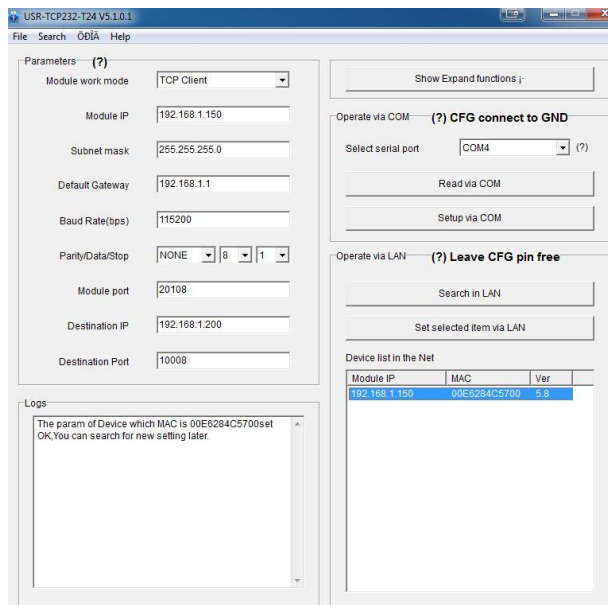


1. Connect the LTAH103C with the POS system through RS232 cable.
2. Connect a cat5 cable from the module to a router.
3. Connect a computer to the same router and open the TCP232-T24 software.
4. Connect the power supply to the module.

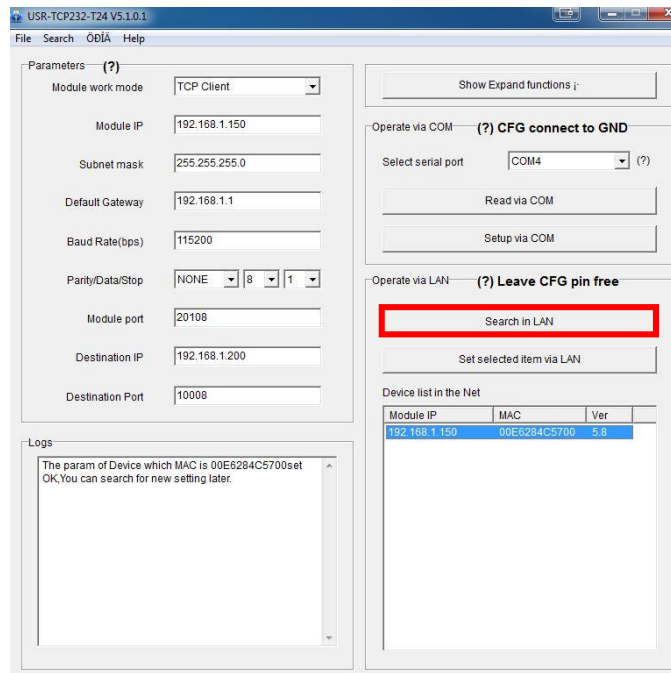
## Configuration Steps

Configure the server parameters as follows:

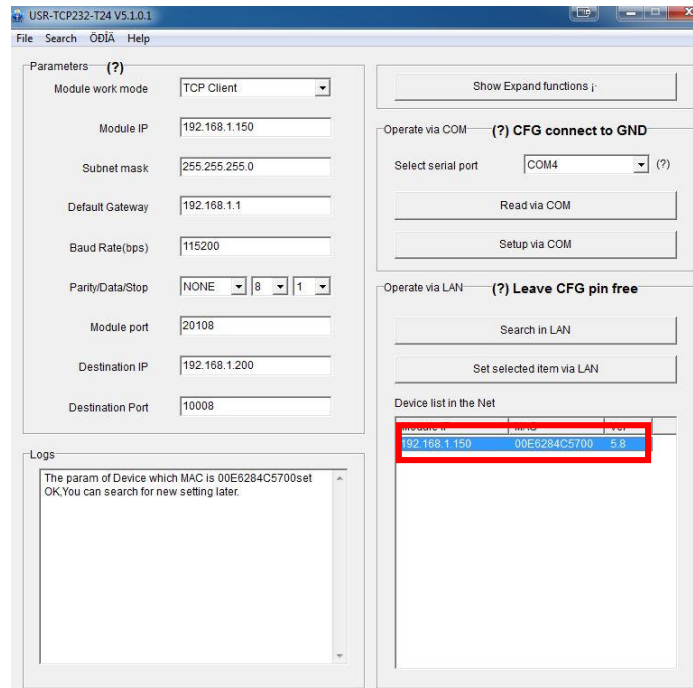
1. Download the setup software at: [http://dl.ltsecurityinc.com/software/RS232-to-TCP\\_V5.1.0.1.zip](http://dl.ltsecurityinc.com/software/RS232-to-TCP_V5.1.0.1.zip). And double click it to open.



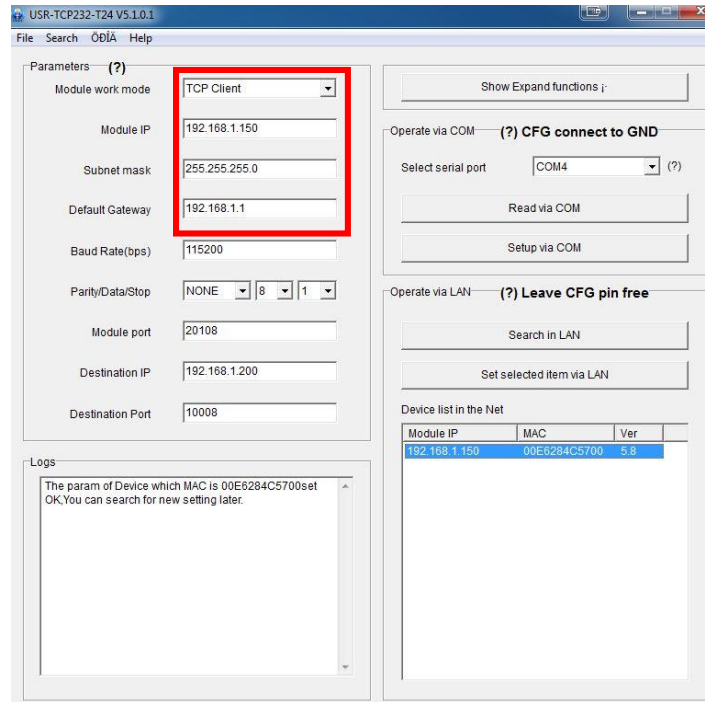
2. Click <Search in LAN> to search for the module within the network.



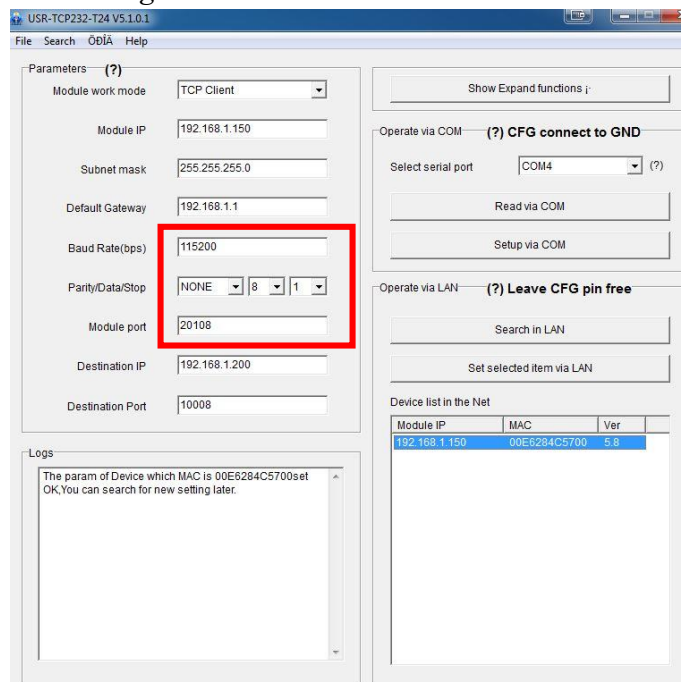
3. Click the module to confirm.



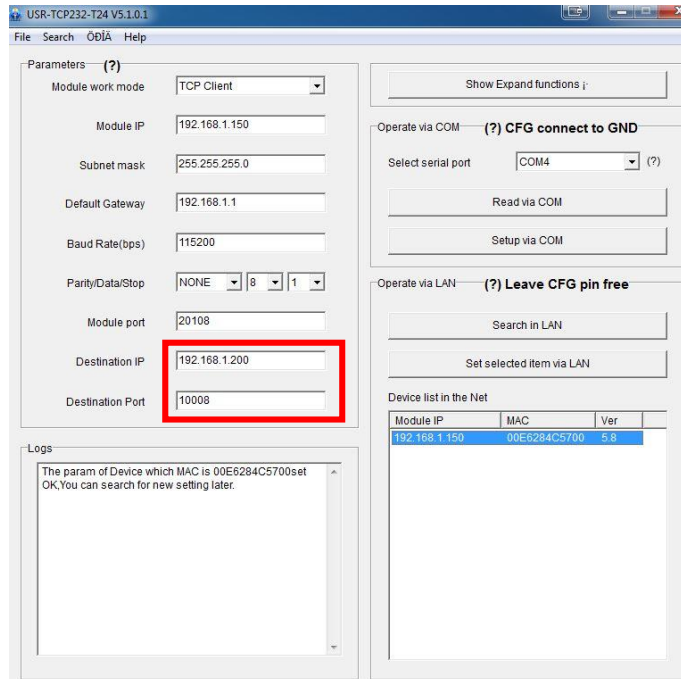
- Choose the *<Module Work Mode>* to be TCP Client, and set an available IP address for the module, please also make sure the other network settings are correct.



- Configure the COM settings based on the POS hardware settings.



6. Input the DVR/NVR's IP address and the POS port settings (Default is 10000).



7. Click <Set Selected item via LAN> to confirm the parameters and update them to the module, then the server is ready.

